

# MONTHLY MEMBERSHIP PROGRESS REPORT

District 9 NE

Results as of: 1/31/2020

GMT:

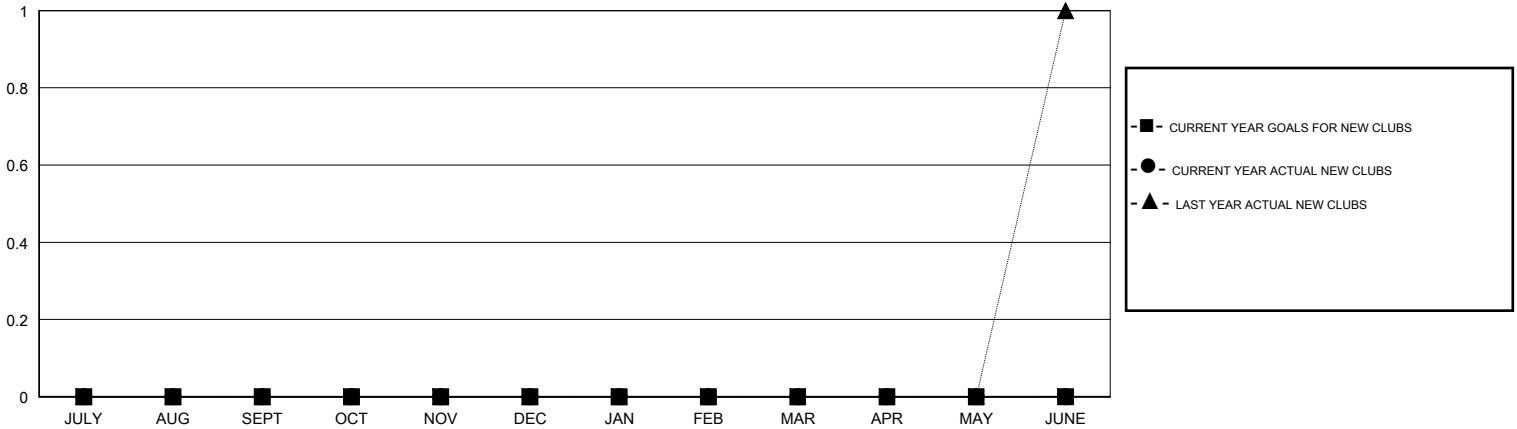
LOCATION IOWA

GMT CA

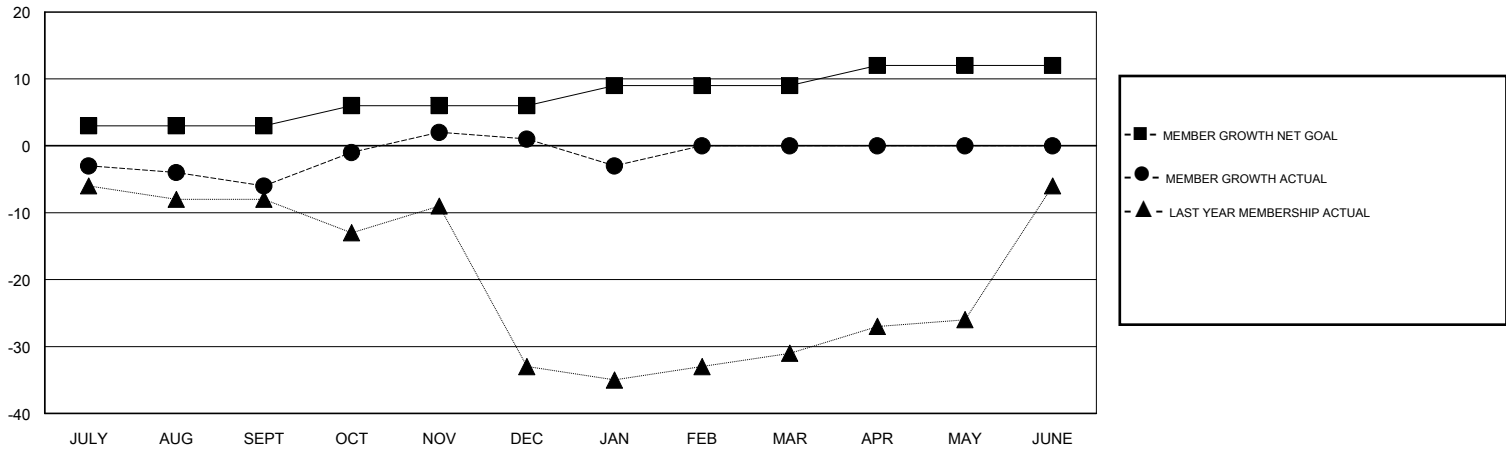
Clubs			
RESULTS FOR 2019-2020			
QUARTER	NEW CLUB GOAL	NEW CLUBS	DROPPED CLUBS
JULY/AUG/SEPT	0	0	0
OCT/NOV/DEC	0	0	0
JAN/FEB/MAR	0	0	0
APR/MAY/JUNE	0	0	0

Members			
RESULTS FOR 2019-2020			
QUARTER	MEMBER GROWTH NET GOAL	MEMBER GROWTH ACTUAL	DROPPED MEMBERS ACTUAL (including transfers)
JULY/AUG/SEPT	3	13	19
OCT/NOV/DEC	3	29	20
JAN/FEB/MAR	3	7	11
APR/MAY/JUNE	3	0	0

GOALS AND ACTUAL NEW CLUBS CUMULATIVE



GOALS AND ACTUAL MEMBERS CUMULATIVE



DROPPED CLUBS: 0	19 CLUBS OF 46 ADDED 1 OR MORE NEW MEMBERS	<u>GENDER DISTRIBUTION</u> MALE 1,073 (78.32%) FEMALE 297 (21.68%)
<u>DROPPED MEMBERS</u> DECEASED 4 CLUB CANCELLED 0 OTHER 46 <hr/> TOTAL 50	<a href="#">CLICK HERE FOR CUMULATIVE MEMBERSHIP DATA</a>	TOTAL FAMILY UNIT MEMBERS 170 FAMILY MEMBERS PAYING HALF DUES 86